



## LOW SEASON

01.03.-28.04.

Fiskepiren > Preikestolen parking		Preikestolen parking > Fiskepiren	
Departure	Arrival	Departure	Arrival
WEEKDAYS, MONDAY-FRIDAY			
09:00	10:15	10:30	11:55
14:15	15:30	15:45	17:10
SATURDAY-SUNDAY			
09:00	10:15	10:20	11:55
14:15	15:30	15:45	17:10

## AUTUMN/WINTER

21.10.-30.11.

Fiskepiren > Preikestolen parking		Preikestolen parking > Fiskepiren	
Departure	Arrival	Departure	Arrival
WEEKDAYS, MONDAY-FRIDAY			
08:15	09:30	15:50	17:10
SATURDAY			
09:00	10:15	16:20	17:40
SUNDAY			
09:00	10:15	16:20	17:40

## SPRING/AUTUMN

29.04.-31.05. and 16.09.-20.10.

Fiskepiren > Preikestolen parking		Preikestolen parking > Fiskepiren	
Departure	Arrival	Departure	Arrival
WEEKDAYS, MONDAY-FRIDAY			
08:15	09:30	09:45	11:10
09:00	10:15	10:30	11:55
14:15	15:30	15:45	17:10
		17:35	18:55
SATURDAY-SUNDAY			
07:30	08:45	08:50	10:25
09:00	10:15	10:20	11:55
14:15	15:30	14:15	15:40
		15:45	17:10

### PRICES

Book at [pulpitrock.no](http://pulpitrock.no) for our best prices. Ferry ticket is bought separately onboard the ferry. You can also pay with Vipps. Open the Vipps-app, click the «pay» button and search for «Pulpit Rock Tours Preikestolen».



Buy combined Airport Express Bus Ticket + Pulpit Rock Bus Ticket and get a discount! Read more at [pulpitrock.no](http://pulpitrock.no)

### GUIDED TOURS

Try a different path to Preikestolen, with a snack and stories along the way - book our local guide! Or why not try our Sunset-Sunrise overnight tour with guide.

Our guide does guided tours several times a week with his guests to the mountain plateau 604 meters above waterlevel, to a fantastic view of Lysefjorden and a feeling of freedom and excitement.

See [pulpitrock.no](http://pulpitrock.no) for information, prices and booking.

### WE ALSO RECOMMEND

**Preikestolen cruise and hike:** Experience Pulpit Rock from the fjord, and the fjord from Pulpit Rock, all in the same experience! Read more at [rodne.no](http://rodne.no)

**Weekends in May have the same departures as weekends in summerseason.**

# Pulpit Rock Tours

TIMETABLE  
2019

Order your  
tickets today

at [pulpitrock.no](http://pulpitrock.no)



We also offer  
guided tours  
every day



### WHAT DOES IT MEAN?

Departure	Arrival	Departure	Arrival
Departure with FERRY and arrival at destination with BUS.		Departure with BUS and arrival at destination with FERRY.	







# SUMMER 01.06.-15.09.

Book your trips and guided tours at [pulpitrock.no](http://pulpitrock.no)

E-mail: [pulpitrock@boreal.no](mailto:pulpitrock@boreal.no)  
Tel.: 51 59 90 60

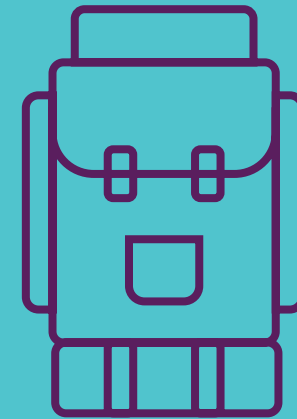
  @pulpitrocktours

Fiskepiren > Preikestolen parking		Preikestolen parking > Fiskepiren	
			
Departure	Arrival	Departure	Arrival
<b>WEEKDAYS, MONDAY-FRIDAY</b>			
07:45	09:00	09:05	10:25
08:15	09:30	09:45	11:10
09:00	10:15	10:30	11:55
09:45	11:00	11:15	12:40
10:30	11:45	13:30	14:55
11:15	12:30	14:15	15:40
12:45	14:00	15:00	16:25
13:30	14:45	15:45	17:10
14:15	15:30	16:30	17:55
15:00	16:15	17:35	18:55
17:30	18:45	20:20	21:40
<b>SATURDAY</b>			
07:30	08:45	08:50	10:25
08:15	09:30	09:45	11:10
09:00	10:15	10:20	11:55
09:45	11:00	11:15	12:40
10:30	11:45	14:15	15:40
11:15	12:30	15:00	16:25
14:15	15:30	15:45	17:10
15:00	16:15	16:30	17:55
15:45	17:00	17:15	18:40
18:00	19:15	18:05	19:25
		19:30	20:55

Fiskepiren > Preikestolen parking		Preikestolen parking > Fiskepiren	
			
Departure	Arrival	Departure	Arrival
<b>SUNDAY</b>			
07:30	08:45	08:50	10:25
09:00	10:15	10:20	11:55
09:45	11:00	11:15	12:40
10:30	11:45	14:15	15:40
11:15	12:30	15:00	16:25
14:15	15:30	15:45	17:10
15:00	16:15	16:30	17:55
15:45	17:00	17:15	18:40
17:15	18:30	18:50	20:10
		20:20	21:40

## PREPARE PROPERLY



The tour requires good shoes and clothing. Bring your own food and drink. You can also have a fantastic dinner at Preikestolen Mountain Lodge. Estimated hiking time from Preikestolen parking and back: 3-5 hours.



## ✓ CHECKLIST

- Good shoes
- Good clothing
- Food
- Drinks
- Good attitude!

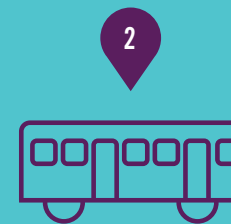
## WHAT DOES IT MEAN?

			
Departure	Arrival	Departure	Arrival
Departure with FERRY and arrival at destination with BUS.		Departure with BUS and arrival at destination with FERRY.	

## THE TRIP IN 1-2-3



Take the ferry from Fiskepiren. The buses correspond with the ferry departures both ways.



Board the Pulpit Rock Tours bus at Tau quay. The bus drives up to Preikestolen parking / Preikestolen Mountain Lodge.



Start your hike to Preikestolen!